



**TATA HITACHI**

Reliable solutions

# EXPERIENCE THE POWER OF

**NEW**  
**EX200**  
*Super*   
SERIES  
**INFRA**



Model: EX200

Engine Power: 133 PS @ 2000 rpm

Operating Weight: 19,800-20,000 kg

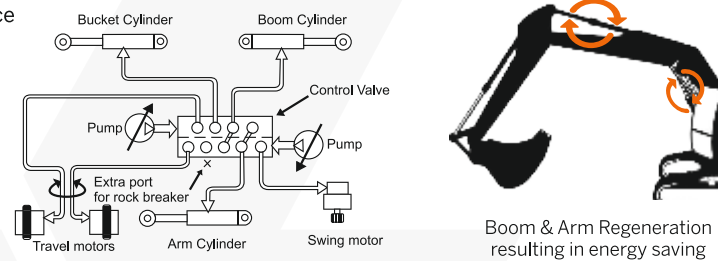
Bucket Capacity: 0.86 - 0.91 m<sup>3</sup>



# Superior Hydraulics

Powered by Hitachi's original Optimum Hydraulic System  
Benefit: fast and smooth combined operations for higher performance

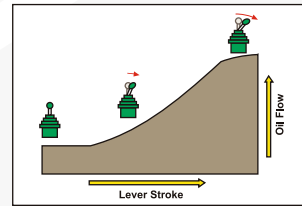
- Cross sensing summation system
- Fuel saving pump system
- Original pilot circuit
- Boom and Arm regeneration, holding valves
- Absolute type hydraulic filter
- New absolute type hydraulic filter
- New improved pilot filter for protection of hydraulic system



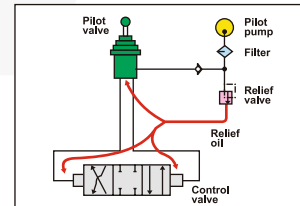
Reliable hydraulic aggregates



Absolute type return filter for improved hydraulic system against contamination



Oil flows in proportion to lever stroke. Load is minimum at neutral position saving fuel



Higher pressure circuit is actuated by a lower pressure pilot circuit reducing jerks on operator

# Unparalleled Versatility

**NEW**  
EX200 Infra has an option of factory fitted rock breaker pipping kit

## APPLICATIONS



**MINING & QUARRYING**  
• Primary Breaking  
• Secondary Breaking



**DEMOLITION & RENOVATION**  
• Masonry Structures  
• Concrete Structures  
• Composite Steel  
• Pavements - Asphalt, Concrete



**METALLURGICAL INDUSTRY**  
• Slag Recycling  
• Cleaning & Debricking



**CONSTRUCTION INDUSTRY**  
• Earthwork  
• Trenching  
• Ground excavation  
• Tunneling  
• Foundation work  
• Building construction



# Power Optimization

- Powered by reliable & fuel efficient cummins 6BT5.9C engine
- Engine efficiency enhancement for lower fuel consumption
- Default EP mode – engine starts at EP mode for reduced fuel consumption & protecting engine
- Mode selection feature – EP mode & HP Mode
- Auto Idle & Auto Deceleration feature for lower fuel consumption
- Dial type throttle for precise engine speed control (Stepper Motor based regulation)



Fuel efficient engine



Dial type throttle

# Efficiency Boosters

- New improved smoother pilot levers for improved operator comfort
- New improved heat insulation system for improved operator comfort inside the cabin
- New improved audio player (USB + FM + Aux)
- New improved InSite (Get insights into your job site)
- New improved cyclonic type air pre-cleaner for protecting the engine
- New heavy duty comfortable suspension seat with its dual tone fabric
- Ergonomic roomy cabin with optional AC
- Aluminium ROC for better cooling
- New improved reliable structures for uniform load distribution

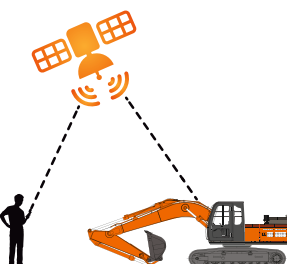
\* Against earlier model



Improved serviceability



Spacious and comfortable working space with well laid out controls



New premium audio player (USB + FM)



Cyclonic type pre-cleaner



Easy to service



Control lever

# Return on Investment

- Most durable & reliable structures
- Highest resale value
- Best in class fuel efficiency
- Lower operating cost
- Wide spread dealer network for easy availability of spare parts
- Filed diagnostic vehicle for quicker after sales support
- Peace of mind through extended warranty
- Extended service intervals for reduced maintenance cost:
  - Hydraulic oil change – 4500Hrs
  - Hydraulic filter change – 1500Hrs



4500 Hrs Hydraulic oil change interval



Default EP Mode resulting in fuel saving



1500 Hrs Hydraulic filter change interval



For complete peace of mind

# SPECIFICATIONS

## ENGINE

Model..... Cummins 6BT5.9C  
 Type.....6 cylinder in-line water cooled  
 Rated fly wheel power.....133 PS @ 2000 rpm  
 Max.torque.....54.8 kgf-m @ 1300 rpm  
 Batteries.....2 X 12 V

## HYDRAULIC SYSTEM

Main pumps.....2 variable displacements axial piston pumps  
 Max. oil flow.....2 X 221 lpm  
 Pilot pump.....1 gear pump  
 Max. oil flow.....20 lpm

## SUPERSTRUCTURE

Swing speed.....13.7 rpm

## RELIEF VALVE SETTINGS

Implement circuit.....285 kgf/cm<sup>2</sup>  
 Swing circuit.....260 kgf/cm<sup>2</sup>  
 Travel circuit.....350 kgf/cm<sup>2</sup>  
 Pilot circuit.....40 kgf/cm<sup>2</sup>

## UNDERCARRIAGE

Travel speeds.....0-4.2 kmph  
 Max.traction force EX200 Super+ .....15,000 kgf  
 Gradability.....35° (70% continuous)  
 No.of upper rollers.....2  
 No. of lower rollers.....7  
 No. of track shoes.....49  
 Shoe width EX200 Super+ .....500 mm

## SERVICE REFILL CAPACITIES

Hydraulic tank.....129.0 ltr  
 Hydraulic system.....220.0 ltr  
 Fuel tank.....310.0 ltr  
 Engine coolant.....35.0 ltr  
 Engine oil (Sump).....14.0 ltr  
 Swing device.....6.7 ltr  
 Travel device (Each side).....6.8 ltr

## WEIGHTS AND GROUND PRESSURE

Machine	Operating weight	Ground pressure
EX200 Backhoe	19,800 - 20,000 kg	0.55 kgf / cm <sup>2</sup>

## DIGGING FORCES

### BACKHOE

Bucket digging forces.....11000 kgf

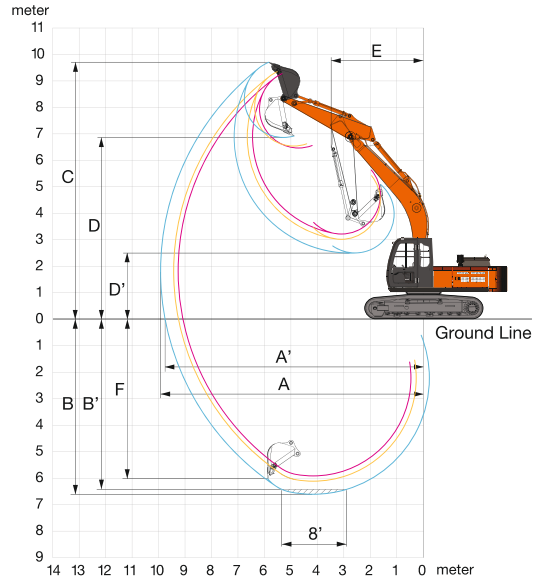
Arm length	2.22 m
Arm digging force	11300 kgf

## BUCKETS

### BACKHOE

Capacity	Width without side cutter	Weight (approx.)	Tooth points
0.86 m <sup>3</sup>	997 mm	940 kg	4
0.91 m <sup>3</sup>	1150 mm	760 kg	5

## BACKHOE ATTACHMENT

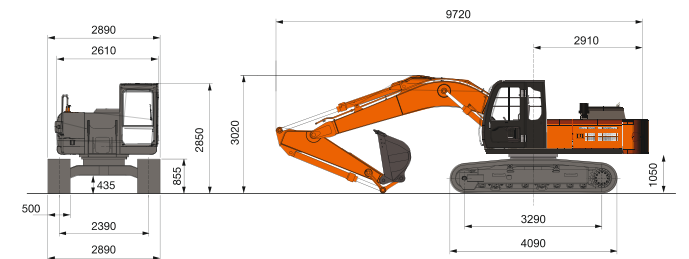


## WORKING RANGES

### BACKHOE

	Boom length	5680
	Arm length	2220
A	Max. digging reach	9260
A'	Max. digging reach (on ground)	9080
B	Max. digging depth	5920
B'	Max. digging depth (8' level)	5290
C	Max. cutting height	9015
D	Max. dumping height	6235
E	Min. swing radius	3750
F	Max. vertical wall depth	5440

## DIMENSIONS



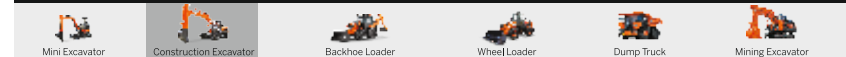
All dimensions are in mm

## Tata Hitachi Construction Machinery Company Private Limited

Registered Office: Jubilee Building, 45 Museum Road, Bangalore, India 560025  
 Telephone: +9180 66953301 / 02 / 03 / 04 / 05 | Email: info@tatahitachi.co.in



### OUR RANGE OF PRODUCTS



Authorised Dealer

These specifications are subject to change without prior notice. The machine depicted may vary from the actual machine. Please contact our nearest office for latest specifications. Accessories shown here are not part of the standard equipment. Performance of the machine may vary with site and operating conditions encountered.