

SPECIFICATIONS

ENGINE

Model.....Cummins 6BT5.9C
 Type.....6 cylinder in-line water cooled
 Rated fly wheel power.....133 PS @ 2000 rpm
 Max.torque.....54.8 kgf-m @ 1300 rpm
 Batteries.....2 X 12 V

HYDRAULIC SYSTEM

Main pumps.....2 variable displacement axial piston pumps
 Max. oil flow.....2 X 221 lpm
 Pilot pump.....1 gear pump
 Max. oil flow.....20 lpm

SUPERSTRUCTURE

Swing speed.....13.7 rpm

RELIEF VALVE SETTINGS

Implement circuit.....285 kgf/cm²
 Swing circuit.....260 kgf/cm²
 Travel circuit.....350 kgf/cm²
 Pilot circuit.....40 kgf/cm²

UNDERCARRIAGE

Travel speeds.....0-4.2 kmph
 Max.traction force.....15,200 kgf
 Gradeability.....35° (70% continuous)
 No.of upper rollers.....2
 No. of lower rollers.....8
 No. of track shoes.....52
 Shoe width.....600/800 mm

SERVICE REFILL CAPACITIES

Hydraulic tank.....129.0 ltr
 Hydraulic system.....220.0 ltr
 Fuel tank.....315.0 ltr
 Engine coolant.....35.0 ltr
 Engine oil (Sump).....14.0 ltr
 Swing device.....6.7 ltr
 Travel device (Each side).....6.8 ltr

GROUND PRESSURE

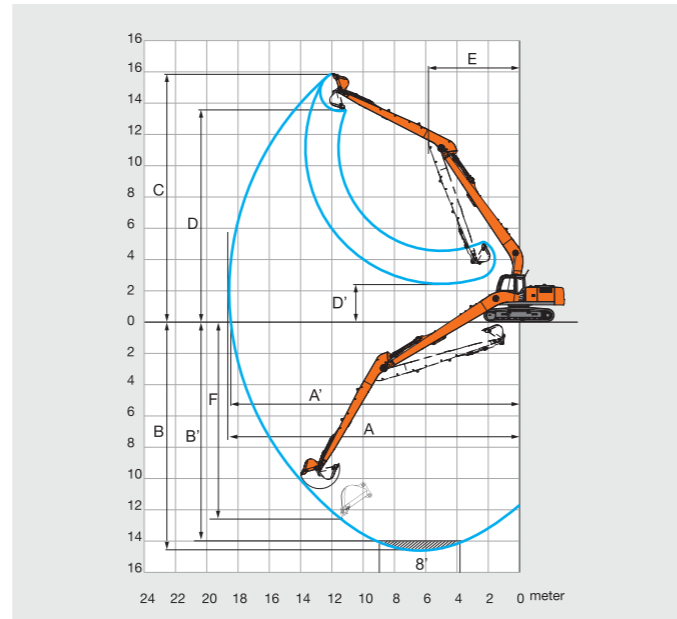
Machine	Operating weight	Ground pressure
EX215LC-SLR	20,800 - 21,300 kg	0.49 kgf / cm ² (600mm) 0.37 kgf / cm ² (800 mm)

BUCKETS

BACKHOE

Capacity	Width without side cutter	Weight (approx.)	Tooth points
0.5 m ³	813 mm	470 kg	4

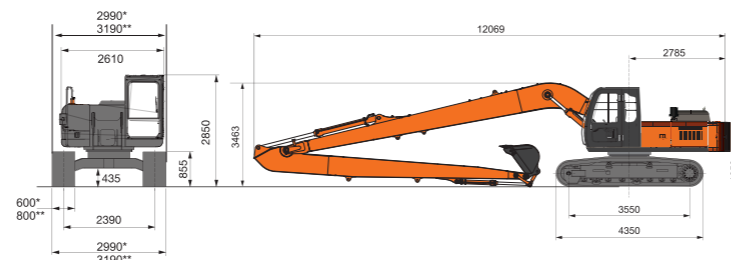
WORKING RANGES



A	Max. Digging Reach	15,560
A'	Max. Digging Reach (on Ground)	15,452
B	Max. Digging Depth	11,628
B'	Max. Digging Depth (8° Level)	11,524
C	Max. Cutting Height	13,465
D	Max. Dumping Height	11,171
D'	Min. Dumping Height	1,369
E	Min Swing Radius	5,040
F	Max. Vertical Wall Depth	10,832

All dimensions are in mm

DIMENSIONS



*Machine with 600 mm track chain
 **Machine with 800 mm track chain



SUPER LONG REACH

EX215LC-SLR
Super
 SERIES



Model Code : EX215LC-SLR
 Engine Power : 133PS@2000rpm
 Back hoe Bucket (ISO Heaped) : 0.5 m³
 Operating Weight : 20,800 - 21,300 kg



Tata Hitachi Construction Machinery Company Private Limited

Registered Office: Jubilee Building, 45 Museum Road, Bangalore, India 560025
 Telephone: +91 80 6695 3301 / 02 / 03 / 04 / 05 | Toll Free : 1800 121 6633
 Email: info@tatahitachi.co.in | Website: www.tatahitachi.co.in

Authorised Dealership

These specifications are subject to change without prior notice. The machine depicted may vary from the actual machine. Please contact our nearest office for latest specifications. Accessories shown here are not part of the standard equipment. Performance of the machine may vary with site and operating conditions encountered.

THCM/EX215LC-SLR/4P/EN/NOV/2019



Superior Hydraulics

Hitachi's original Optimum Hydraulic System – Benefit: safe and smooth combined operations for higher performance. It features:

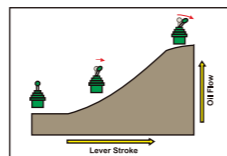
- ✦ Cross sensing summation system
- ✦ Fuel saving pump system
- ✦ Original pilot circuit
- ✦ Boom and Arm regeneration, holding valves
- ✦ Spare spool for attachments
- ✦ Absolute type hydraulic filter



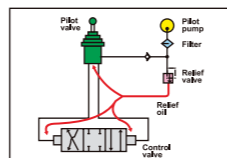
Reliable hydraulic aggregates



Absolute type hydraulic filter for complete hydraulic system protection against contamination



Oil flows in proportion to lever stroke. Load is minimum at neutral position saving fuel



Higher pressure circuit is actuated by a lower pressure pilot circuit reducing jerks on operator

Unparalleled Versatility

- ✦ Port bulk material re-handling
- ✦ Construction works
- ✦ Salt pans and fly ash handling
- ✦ Well digging and pond excavation
- ✦ Maintenance of lakes and ponds

Power Optimization

- ✦ Powered by reliable and fuel efficient Cummins 6BT5.9C engine.
- ✦ Auto Idle and Auto Deceleration (Original Tata Hitachi technology)
- ✦ Stepper motor based precise engine speed control; Dial type throttle
- ✦ Mode selection feature [EP mode, HP mode]
- ✦ Default EP mode – engine starts in EP mode only, reducing fuel consumption and protecting the engine
- ✦ Engine efficiency improvement for lower fuel consumption



Fuel efficient engine



Dial type throttle

Efficiency Boosters

- ✦ Most comfortable heavy duty suspension seat in its class with dual tone fabric
- ✦ Ergonomic roomy cabin with single radius A Pillar and handrail
- ✦ New and improved audio player (USB+ FM)
- ✦ Heat reflective coating on cabin top
- ✦ Engine hot air draft redirection
- ✦ New premium upholstered interiors
- ✦ New hinged sleek honeycomb mesh ROC door with lock
- ✦ New honeycomb mesh pump side door
- ✦ Cyclonic type pre-cleaner
- ✦ Aluminum ROC for better cooling
- ✦ Reduced engine hood height for superior visibility
- ✦ Upgraded monitor, ergonomic hand grips and controls
- ✦ Hydra-mounts for cab mounting
- ✦ Battery relay protection cover
- ✦ InSite enabled (Insights into your job site)*
- ✦ 2 extra cab lights & Front guard as standard



Spacious and comfortable working space with well laid out controls



Premium heat insulating interior upholstery



Easy to service



Cyclonic type air pre-cleaner



Honeycomb mesh type ROC door



Improved serviceability



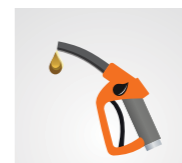
Heat reflective coating on cabin top



New premium audio player (USB + FM)

Return on Investment

- ✦ Highest resale value
- ✦ Lower operating cost
- ✦ Best in class fuel efficiency
- ✦ Wide spread dealer network for easy availability of spare parts
- ✦ Field diagnostic vehicle for quicker after sales support
- ✦ Peace of mind through extended warranty
- ✦ Extended service intervals for reduced maintenance cost:
 - Hydraulic oil change: 3000 Hours
 - Hydraulic filter change: 1500 hours



Default EP Mode resulting in fuel saving



3000 Hrs Hydraulic oil change interval



1500 Hrs Hydraulic filter change interval



*Conditions apply