



TATA HITACHI

Reliable solutions

NEW

EX70 *PRIME*
SERIES

SPEND LESS. EARN MORE.

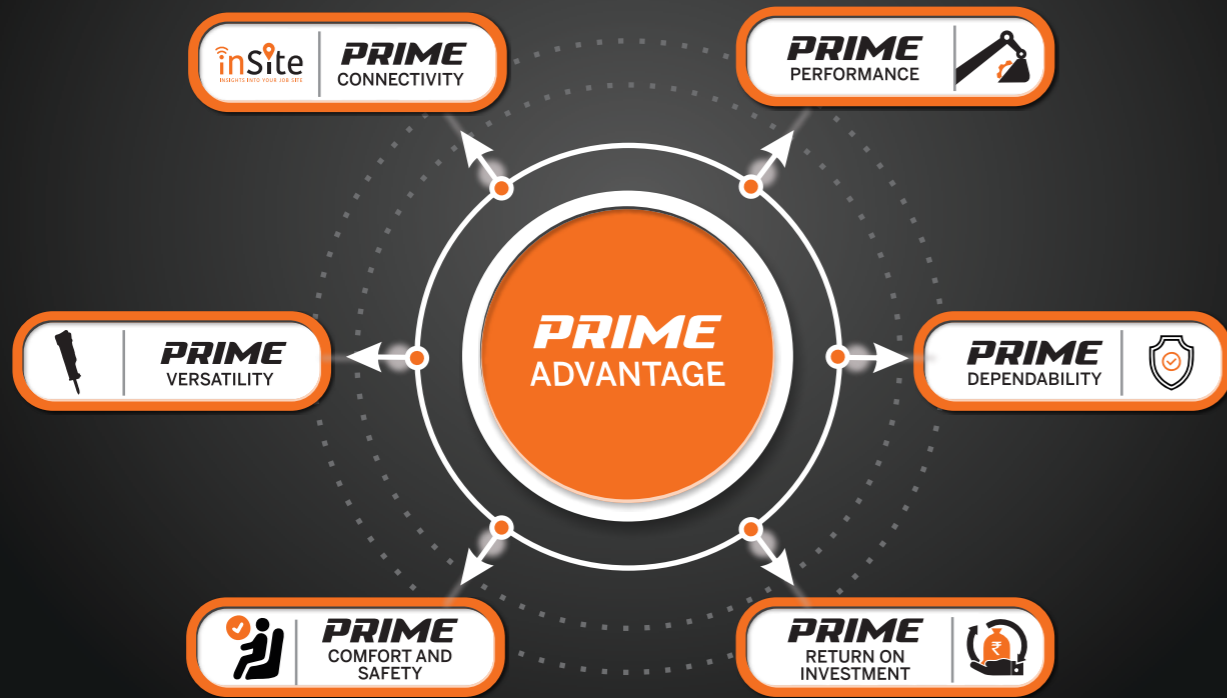
Experience The Prime Advantage



Model : EX70 | Engine Power : 49 PS @ 2000 rpm | Operating Weight : 7200 kg | Bucket Capacity : 0.10 - 0.68 m³

PRIME
SERIES

Everything you need in your 7 Ton Excavator is Performance, Dependability, Comfort, Safety, Return On Investment, Connectivity and Versatility. Tata Hitachi's EX 70 Prime Series Hydraulic Excavator sets benchmarks in all these areas. The machine has been designed to provide precision control, high fuel efficiency, high productivity, superior operator comfort, excellent versatility and unmatched return on investment.



PRIME DEPENDABILITY

Higher Durability

- Strengthened arm bucket joint (10% higher boss diameter and flanged bushes) **NEW**
- Reinforced track frame (near idler) **NEW**
- HD track frame **NEW**
- Track guard as standard fitment **NEW**
- 2 point upper roller support **NEW**
- Strengthened bucket



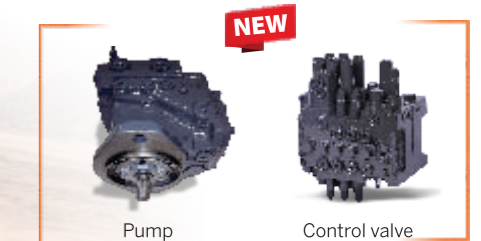
Heavy duty undercarriage

2 point upper roller support

Strengthened bucket

Higher Reliability

- Proven Hitachi technology
- CAD designed, robot welded, tested and validated to international standards
- Proven and reliable aggregates



Pump

Control valve

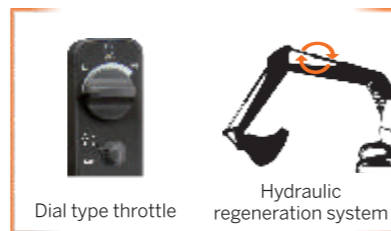
PRIME PERFORMANCE

Higher Production

- Next generation high torque engine (20% higher torque engine) **NEW**
- Engine compatible with futuristic emission norms **NEW**
- Intelligent Optimum Hydraulic System (iOHS) **NEW**
- Wide range of buckets designed for higher fill factor

Least Fuel Consumption

- Auto Idle and Auto Deceleration
- Mode selection- EP and HP mode
- Dial type throttle
- Fuel saving pump system
- Hydraulic regeneration system



Dial type throttle

Hydraulic regeneration system



Engine

PRIME RETURN ON INVESTMENT



Low Fuel Consumption

- iOHS Japanese hydraulics **NEW**
- Fuel saving pump
- Dual work modes



Low Maintenance Cost

- Long drain hydraulic oil – 4500hrs
- Maintenance free cyclonic air pre cleaner for longer engine life
- Fuel pre filter for better filtration efficiency
- HP return line filter for longer life of hydraulic aggregates



High Resale Value

- Most trusted brand
- Largest dealer network
- Highly reliable & durable machines
- Easy availability of parts & support

Extra Profit over 5 years

₹ 15,10,000*

*Based on testing done in controlled and standard environment. Terms and condition apply



- Boom arm regeneration
- Holding valves in boom arm bucket
- Rock breaker piping kit (optional)



- Sturdier bucket cylinder with metallic cap for seal protection
- 11% larger pin diameter **NEW**
- Flanged bushes **NEW**
- 10% bigger boss **NEW**



- Improved durability of
- 0.1 m³ Trench
- 0.30 m³ HD
- 0.32 m³ GP (7% bigger) **NEW**
- 0.35 m³ LM
- 0.68 m³ Salt



- Comfortable and roomy cabin
- Weight adjustable suspension seat.
- Seat belt, fan, all new music system for operator comfort and safety



- 100% pilot operation (including travel and dozer) **NEW**
- 30% smoother pilot levers **NEW**



- Future ready hi torque BS III engine **NEW**
- All new cyclonic pre-cleaner **NEW**
- New dust proof indoor net **NEW**



- All new high efficiency hydraulic pump **NEW**
- New generation control valve **NEW**
- Hitachi's proven hydraulics for powerful performance



- Choice of track shoe - 450 mm/600 mm
- HD track chain
- Double supported upper roller **NEW**
- Dozer cylinder guard for cylinder protection



PRIME COMFORT AND SAFETY

Comfort

- Smooth operating levers. 30% reduced effort **NEW**
- Ergonomic controls with all new audio player (USB+FM), fan for prime comfort **NEW**
- 100% pilot controlled operations including dozer & travel
- Weight adjustable suspension seat with multiple seat adjustments

Safety

- Seat belt, front guard, anti skid tapes for operator's safety
- Baffle plates to separate hot & cold zones
- Starter motor with thermal cut off to prevent over cranking



PRIME VERSATILITY

Attachments :

- The machine comes in tailor made options and is easily customizable with various attachments
- Option of factory fitted rock breaker piping kit



Options* :

Available in below options:

- Arm - Standard arm / Long arm
- Tracks - 450 mm / 600 mm
- Wide range of buckets for wide variety of applications



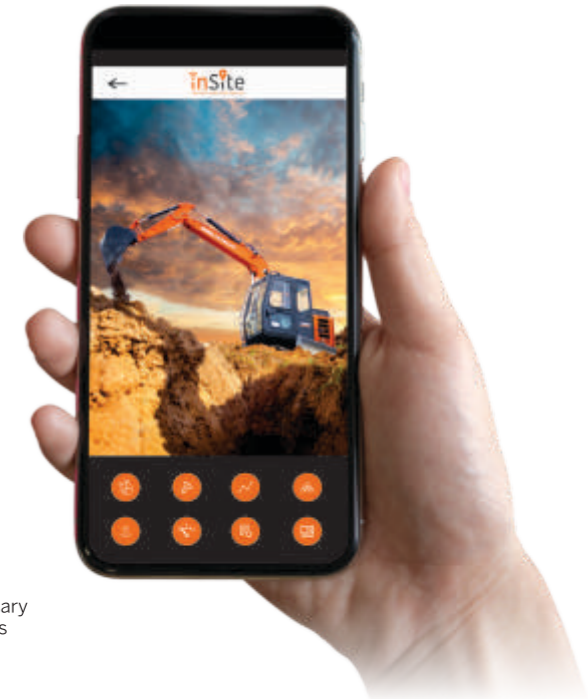
*Combinations will be based on application suitability and design approval

PRIME CONNECTIVITY



inSite
INSIGHTS INTO YOUR JOB SITE

TELEMATICS SUITE
FOR REAL TIME MONITORING



- Ability to track Machine Maintenance Service due date
- Fleet Management
- Overall Fleet Summary in Graphical Widgets (Dashboard)
- Fuel Level
- Location, Geo Fencing
- Asset Operation
- Asset Utilisation
- Accessible on Web and App



SUPPORT CHAIN

SUPPORT SOLUTIONS

- Wide spread dealer network for easy availability of spare parts
- Field diagnostic vehicle and mobile workshop for quicker after-sales service
- Peace of mind through extended warranty*
- Extended service intervals for reduced maintenance cost



SPECIFICATIONS

ENGINE

Model	TATA 497 DI 38 BSIII
Rated	Water cooled, 4 cylinder in-line diesel engine
Rated fly wheel power	49PS @ 2000 rpm
Max.torque	222 Nm @1400rpm
Batteries	2x12V

HYDRAULIC SYSTEM

Main pumps	2 variable displacements axial piston pumps
Flow rate	2x60 lpm
Pilot pump	1 gear pump
Flow rate	18.2 lpm

SUPERSTRUCTURE

Swing Speed	12.8rpm
-------------------	---------

RELIEF VALVE SETTINGS

Implement circuit	265 Kgf/cm ²
Swing circuit	235 Kgf/cm ²
Travel circuit	280 kgf/cm ²
Pilot circuit	35 kgf/cm ²

UNDERCARRIAGE

Travel Speed	Low 2.5- High 5.0 kmph
No. of upper rollers	1x2
No. of lowers rollers	5x2
No. of track shoes	37x2
Shoe width	450mm

SERVICE REFILL CAPACITIES

Hydraulic tank	42.0 ltr
Hydraulic system	92.0 ltr
Fuel tank	135.0 ltr
Engine coolant	15.5 ltr
Engine oil	9.0 ltr
Travel device (Each side)	3.0 ltr

WEIGHTS AND GROUND PRESSURE

Machine	Operating weight	Ground pressure
Backhoe with Dozer Blade	7200 kg	0.34 kgf /cm ²
Backhoe without Dozer Blade	6700kg	0.32 kgf /cm ²

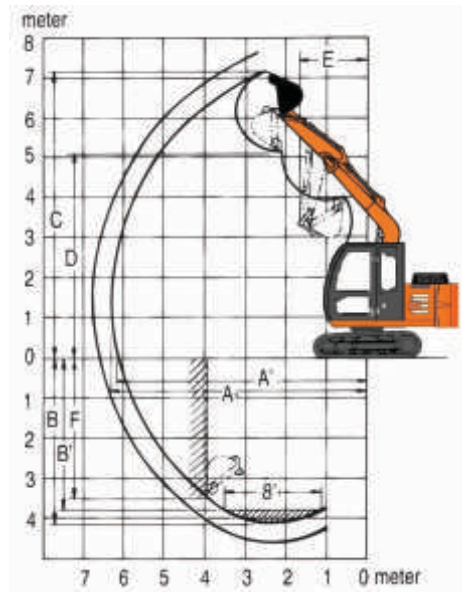
DIGGING FORCES

Bucket digging force	4800 kgf
Arm crowd force	3700 kgf

BUCKETS

Capacity	Width with side cutter	Width without side cutter	Weight	Tooth Points	Type
0.35 m ³	860 mm	770 mm	212 kg	5	Wider GP
0.32 m ³	795 mm	705 mm	228 kg	4	GP
0.30 m ³	750 mm	660 mm	216 kg	4	HD
0.13 m ³	-	360 mm	167 kg	2	Trench
0.68 m ³	-	1350 mm	240 kg	-	LD Less than 800kg/m ³

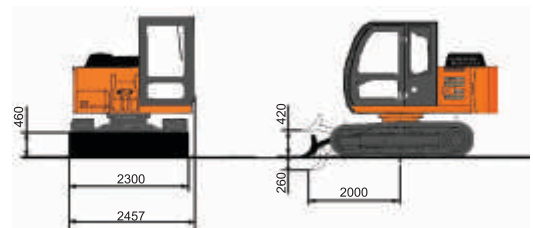
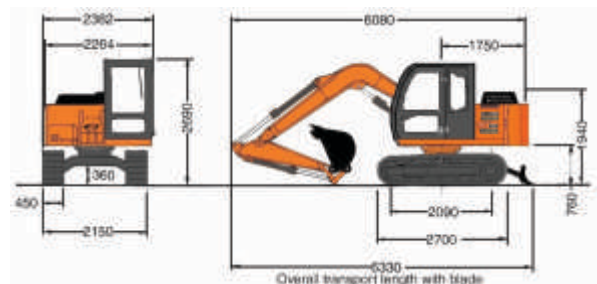
WORKING RANGES



		3720	
		1620	2120
A	Max. digging reach	6310	6800
A	Max. digging reach (on ground)	6160	6660
B	Max. digging depth	4150	4660
B	Max. digging depth (8 level)	3800	4370
C	Max. cutting height	7150	7550
D	Max. dumping height	5070	5470
E	Min. swing radius	1700	2060
F	Max. vertical wall depth	3500	4060

All dimensions are in mm

DIMENSIONS



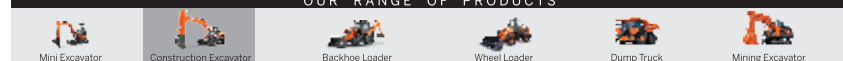
All dimensions are in mm

Tata Hitachi Construction Machinery Company Private Limited

Registered Office: Jubilee Building, 45 Museum Road, Bangalore, India 560025
Telephone: +9180 66953301 / 02 / 03 / 04 / 05 | Email: info@tatahitachi.co.in



OUR RANGE OF PRODUCTS



Authorised Dealer

These specifications are subject to change without prior notice. The machine depicted may vary from the actual machine. Please contact our nearest office for latest specifications. Accessories shown here are not part of the standard equipment. Performance of the machine may vary with site and operating conditions encountered.