

# ***ULTRA PERFORMANCE***

**NEW**

**ZAXIS 140<sub>H</sub>**  
***ULTRA***

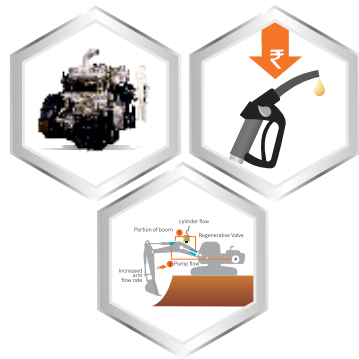




# ULTRA PERFORMANCE

## Unmatched Performance

- Reliable Japanese Engine
- Regeneration Circuits
- Enhanced Power Boost
- Best-in-class Swing Speed
- Auto Power Lift Mode
- High Production with Low Fuel Consumption
- Faster Cycle Time
- Swift Front Attachment Movements



## Limitless Reliability and Durability

- Robust Structures
- Strengthened Undercarriage
- Reliable Pump and Motors
- Proven Upper Structure
- Reinforced Front Attachments
- Durable Components



## Top-Notch Technology

- HIOS III Hydraulic System
- New-age Micro-Processor Based Controls
- ConSite Telematics Suite
- Global e-Service



## Redefined Comfort and Safety

- Well Ventilated and Spacious Cabin
- Auto control Air Conditioner
- Ergonomically Placed Controls
- Suspension Seat
- AM/FM, Bluetooth Music System with Powerful Speakers

### Safety:

- OPG Cabin
- Powerful LED lights



## Assured Support

- Extended Warranty
- Wide-spread Dealer Network
- Field Diagnostic Vehicle
- Mobile Workshop



# SPECIFICATIONS

## ENGINE

Model .....Isuzu CC-4BG1T  
 Type .....4-cycle water-cooled, direct injection  
 Aspiration.....Turbocharged, intercooled  
 No. of cylinders .....4  
**Rated power**  
 ISO 9249, net .....66.0 kW (88.5 HP) at 2150 rpm  
 SAE J1349, net .....66.0 kW (88.5 HP) at 2150 rpm  
 Maximum torque.....347 Nm (35.4 kgfm) at 1600 rpm  
 Piston displacement .....4.329 L  
 Bore and stroke .....105 mm x 125 mm  
 Batteries .....2 x 12 V / 55 Ah

## HYDRAULIC SYSTEM

### Hydraulic Pumps

Main pumps .....2 variable displacement axial piston pumps  
 Maximum oil flow .....2 x 105 L/min  
 Pilot pump .....1 gear pump  
 Maximum oil flow .....30.24 L/min

### Hydraulic Motors

Travel.....2 variable displacement axial piston motors  
 Swing .....1 axial piston motor

### Relief Valve Settings

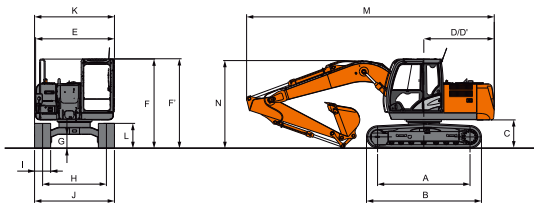
Implement circuit .....34.3 MPa (350 kgf /cm<sup>2</sup>)  
 Swing circuit.....32.3 MPa (330 kgf /cm<sup>2</sup>)  
 Travel circuit.....34.3 MPa (350 kgf /cm<sup>2</sup>)  
 Pilot circuit .....4.0 MPa (41kgf /cm<sup>2</sup>)  
 Power boost .....36.3 MPa (370 kgf /c m<sup>2</sup>)

## UPPER STRUCTURE

Swing speed .....13.7 rpm

## BACKHOE ATTACHMENTS

Capacity	Width		No. of teeth	Weight	Recommendation	
	Without side cutters	With side cutters			2.10m arm	3.01m arm
0.7m <sup>3</sup> (GP)	1066 mm	1186 mm	5	508 kg	✓	
0.6m <sup>3</sup> (HD)	931 mm	-	4	574 kg	✓	
0.45m <sup>3</sup>	802 mm	-	4	475 kg		✓



A Distance between tumblers	2 880	J Undercarriage width	2 490
B Undercarriage length	3 580	K Overall width	2 490
*C Counterweight clearance	865	*L Track height with triple grouser shoes	790
D Rear-end swing radius	2 190	M Overall length	
E Overall width of upperstructure	2 431	With 2.10 m arm	7 658
F Overall height of cab	2 718	With 3.01m arm	7 710
F Overall height of upperstructure	2 718	N Overall height of boom	
*G Min. ground clearance	440	With 2.10 m arm	2 579
H Track gauge	1 990	With 3.01m arm	2 680
I Track shoe width	500		

\* Excluding track shoe lug G: Triple grouser shoe

## UNDER CARRIAGE

### Tracks

Heat-treated connecting pins with dirt seals Hydraulic (grease) track adjusters with shock-absorbing recoil springs.

### Numbers of Rollers and Shoes on Each Side

Upper roller .....1  
 Lower rollers .....7  
 Track shoes .....44  
 Track guard .....1

### Travel Device

Each track driven by 2-speed axial piston motor.  
 Parking brake is spring-set/hydraulic-released disc type.  
 Automatic transmission system: High-Low.

Travel speeds .....High : 0 to 5.5 km/h  
 .....Low : 0 to 3.4 km/h  
 Maximum traction force .....102 kN (10400 kgf)  
 Gradeability.....70% (35 degree) continuous

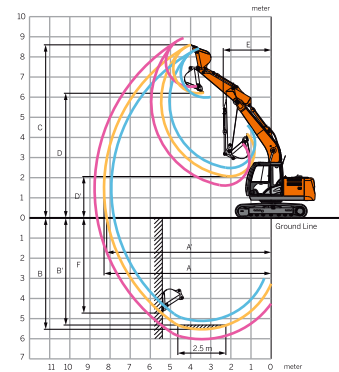
## SERVICE REFILL CAPACITIES

Fuel tank .....250.0 L  
 Engine coolant .....19.0 L  
 Engine oil .....18.5 L  
 Swing device .....3.2 L  
 Travel device (each side) .....4.0 L  
 Hydraulic system .....170.0 L  
 Hydraulic oil tank .....69.0 L

## BUCKET AND ARM DIGGING FORCES

Arm length	2.10 m	3.01 m
Bucket digging force	104 kN (10 600 kgf)	104 kN (10 600 kgf)
Arm digging force	77 kN (7 900 kgf)	63.52 kN (6 477 kgf)

## WORKING RANGES



	Boom length	4.60 m	
		2.10 m	3.01 m
A	Max. digging reach	7 900	8 740
A'	Max. digging reach (on ground)	7 770	8 620
B	Max. digging depth	5 150	6 060
B'	Max. digging depth for 2.5 m level	4 910	5 870
C	Max. cutting height	8 370	8 900
D	Max. dumping height	5 960	6 490
D'	Min. dumping height	2 487	1 607
E	Min. swing radius	2 310	2 590
F	Max. vertical wall digging depth	4 650	5 500

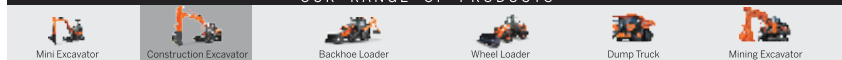
Unit: mm

## Tata Hitachi Construction Machinery Company Private Limited

Registered Office: Jubilee Building, 45 Museum Road, Bangalore, India 560025  
 Telephone: +918066953301 / 02 / 03 / 04 / 05 | Email: info@tatahitachi.co.in



### OUR RANGE OF PRODUCTS



Authorised Dealer

These specifications are subject to change without prior notice. The machine depicted may vary from the actual machine. Please contact our nearest office for latest specifications. Accessories shown here are not part of the standard equipment. Performance of the machine may vary with site and operating conditions encountered.